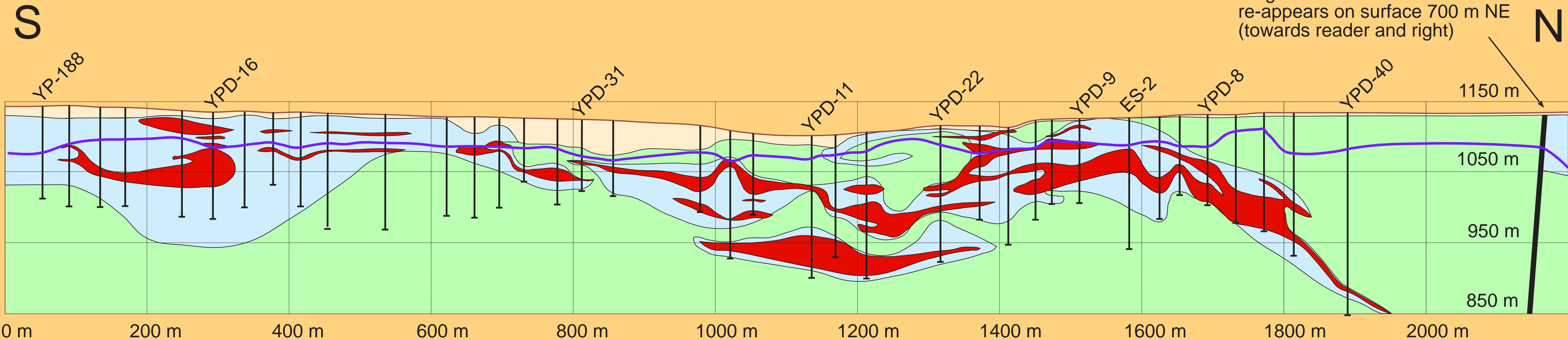
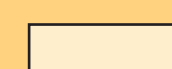


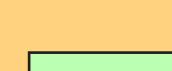



SIMPLIFIED LONGITUDINAL SECTION OF THE YENIPAZAR Au-Ag-Cu-Pb-Zn METAMORPHOSED VMS-DEPOSIT, CENTRAL TURKEY

Large fault zone. Mineralization re-appears on surface 700 m NE (towards reader and right)



-  Neogene cover - Marly clay, occasionally sandy. Calcrete layer on top.
-  Well mineralized zone. Subeconomic background mineralization extends around and between these zones
-  Schist halo (meta-sediments/tuffites)
-  Gneiss (intermediate to acidic footwall meta-volcanics) - intercalating schist probably due to low-angle thrusting
-  Boundary of oxide zone

